



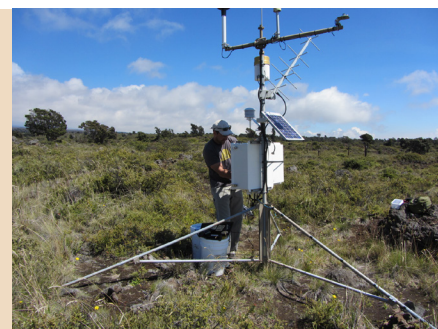
The Western Regional Climate Center (WRCC) is one of six National Oceanic and Atmospheric Administration (NOAA) Regional Climate Centers across the nation. The WRCC has been housed within DRI's Division of Atmospheric Science since its inauguration in 1986.

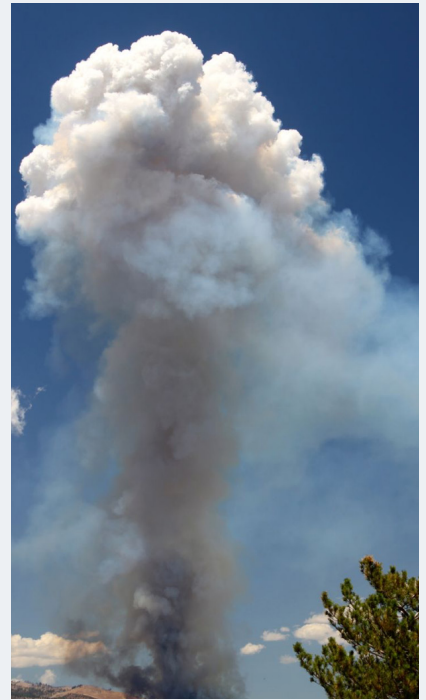
WRCC acts as a repository for high-quality historical climate data and information for the western U.S., a region covering the eleven westernmost states, including Alaska, Hawaii, and the U.S. Affiliated Pacific Islands. WRCC offers value-added tools and maintains climate services staff to support the analysis and interpretation of climate data in support of decision-making. WRCC also helps to coordinate climate-related activities at local, state, regional, and national scales. Federal partners such as the National Integrated Drought Information System, the National Centers for Environmental Information, the Southwest Climate Adaptation Science Center, and the California-Nevada Adaptation Program support some of WRCC's major activities.

In addition to climate services, WRCC staff engage in applied research on a variety of weather and climate topics. The group works closely with water resource managers, land management agencies, operational weather forecasters, local governments, non-profits and others to develop climate science and tools to meet specific stakeholder needs.

RESEARCH AREAS

- Weather and climate extremes
- Wildfire and smoke impacts
- Drought
- Snowpack and water resources
- Climate adaptation
- Agriculture
- Human dimensions of climate
- Climate tool development, evaluation, and assessment





Front: (top) The Transverse Ranges of Southern California; (bottom) WRCC staff work on a weather station in Hawaii Volcanoes National Park. Back (clockwise): High Sierra, March 2010 Credit: Ben Hatchett; Smoke plume from a fire near Reno, NV; Trinity Reservoir in CA during drought; WRCC staff talk drought with Great Basin farmers.



SERVICES & CAPABILITIES

Web-based Tool and Product Development

- Data analysis tools
- Custom data visualization
- Geospatial and interactive mapping
- Evaluation of climate tools and information

Applied Research

- Analysis and interpretation of weather and climate data
- Custom data-based decision support
- Development of communication materials
- Media interviews on regional weather and climate

Monitoring

- Siting, installation, and maintenance of weather stations
- Data ingest and hosting

Social Science

- Evaluation of climate tools and information
- Facilitation and evaluation of collaborative and co-produced climate science

FEATURED WRCC TOOLS

West Wide Drought Tracker

<https://wrcc.dri.edu/my/climate>

State Climate Trackers

<https://wrcc.dri.edu/my/climate>

U.S. Snow Drought Tracker

<https://wrcc.dri.edu/my/climate>

National Parks Monitoring

<https://wrcc.dri.edu/NPS.html>

Freezing Level Tracker

<https://wrcc.dri.edu/cwd/products/>

Station Viewer

<https://wrcc.dri.edu/my/stations/community>

Climate Cloud Computing

<https://climateengine.com/>

SECTORS SERVED

- K-12 and higher education
- Scientific research
- Local, state, federal governments
- Engineering and construction
- Environmental consulting
- Legal services
- Mining and extraction
- Utilities
- Insurance
- Forestry
- Agriculture
- Individual households
- Recreation



dri.edu

We are Nevada's non-profit research institute, founded in 1959 to empower experts to focus on science that matters. We work with communities across the state — and the world — to address their most pressing scientific questions. We're proud that our scientists continuously produce solutions that better human and environmental health. At DRI, science isn't merely academic — it's the key to future-proofing our communities and building a better world. For more information, please visit www.dri.edu.